

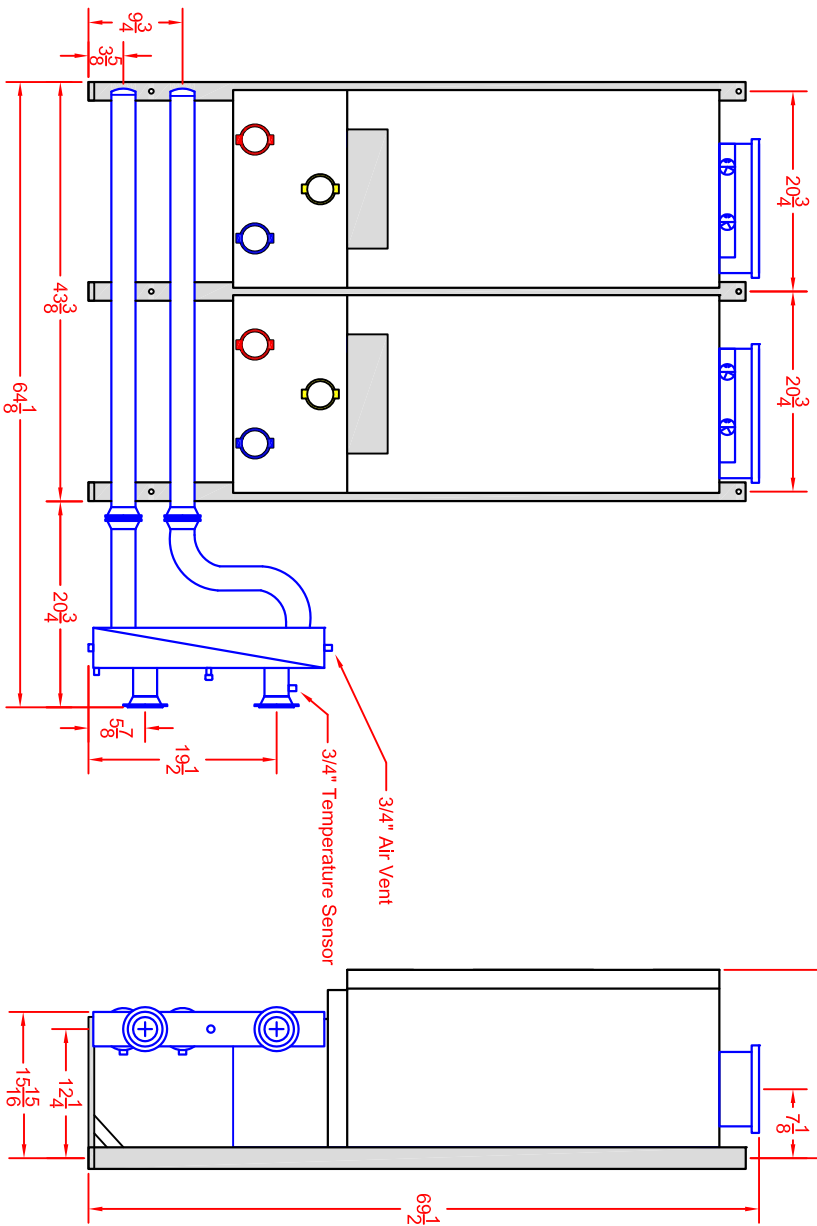
4

3

2

1

REVISIONS			
REV	DESCRIPTION	DATE	APPROVED
A	ADD PART NO	05-09-2011	JH



- Notes:
1. Companion NPT flange provided for field installation.
 2. Pipe size = 2 1/2"
 3. For more details on each boiler refer to the installation manual.
 4. Insulation is furnished but not shown for clarity.

Bosch Thermotechnology Corp.
 50 Wentworth Ave.
 Londonderry, NH 03053
 Phone: 603-552-1100

This drawing is the exclusive property of Bosch Thermotechnology Corporation, it may not be reproduced or given to third parties.

Bosch Thermotechnology Corp.

DESCRIPTION
 GB162 Cascade TL-2

Tolerance
 Fraction = ± 1/16"
 x.x = ± 0.030
 x.xxx = ± 0.015
 x.xxx = ± 0.005

Drawn By: VA
 Approved By: JH

SIZE SCALE: A NTS
 DATE: 05/03/2011

PART NO.: BTC 432006107 A
 SHEET 1 of 1

REV.: A

4

3

2

1

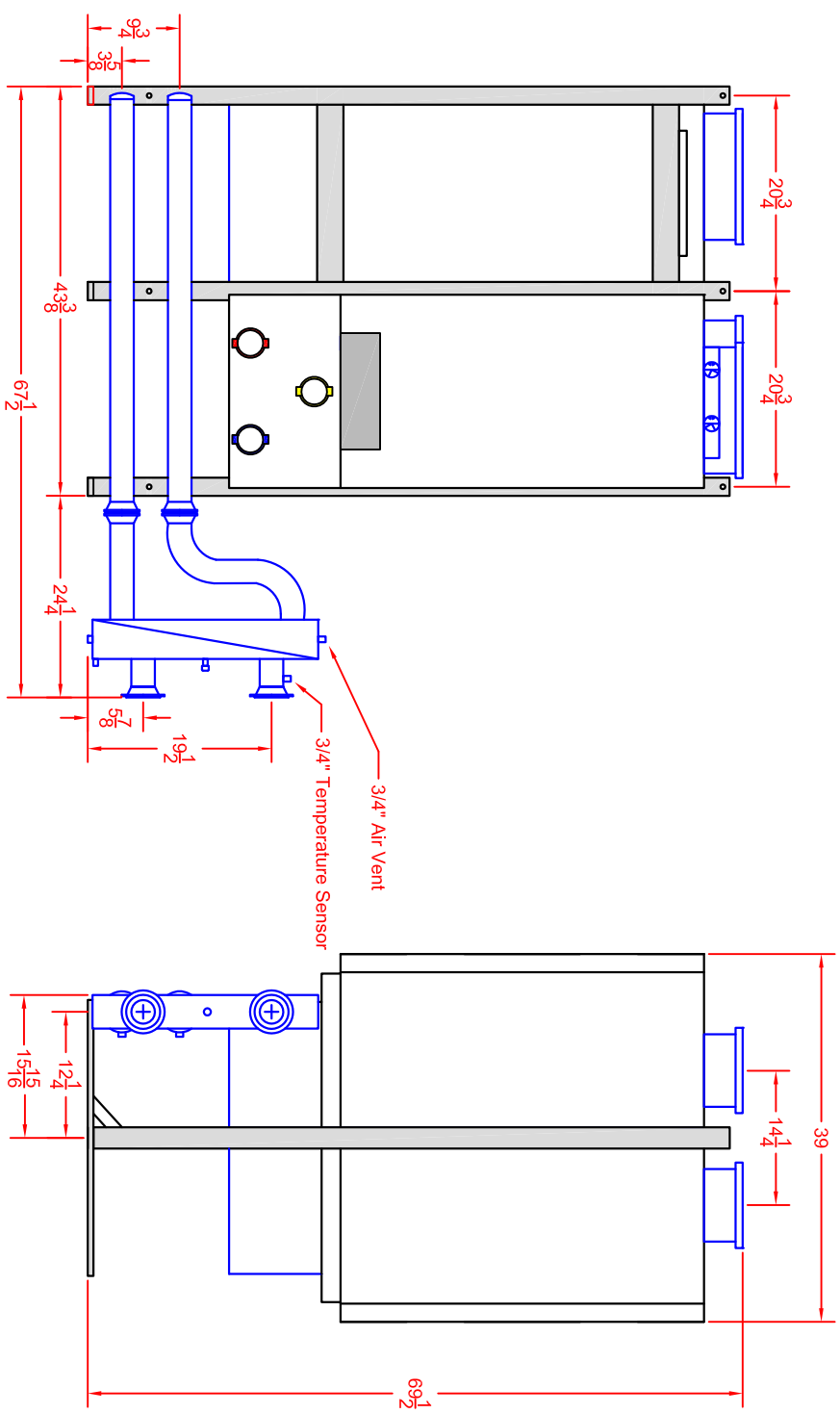
4

3

2

1

REVISIONS			
REV	DESCRIPTION	DATE	APPROVED
A	ADD PART NO	05-09-2011	JH



Notes:

1. Companion NPT flange provided for field installation.
2. Pipe size = 2 1/2"
3. For more details on each boiler refer to the installation manual.
4. Insulation is furnished but not shown for clarity.

Bosch Thermotechnology Corp.
 50 Wentworth Ave.
 Londonderry, NH 03053
 Phone: 603-552-1100

This drawing is the exclusive property of Bosch Thermotechnology Corporation, it may not be reproduced or given to third parties.

Bosch Thermotechnology Corp.

DESCRIPTION
 GB162 Cascade TR-3

Tolerance
 Fraction = ± 1/16"
 x.x = ± 0.030
 x.xx = ± 0.015
 x.xxx = ± 0.005

Drawn By: VA
 Approved By: JH

SIZE SCALE: A NTS
 PART NO.: BTC 432006103 A
 DATE: 05/93/2011
 SHEET 1 of 1
 REV.: A

4

3

2

1

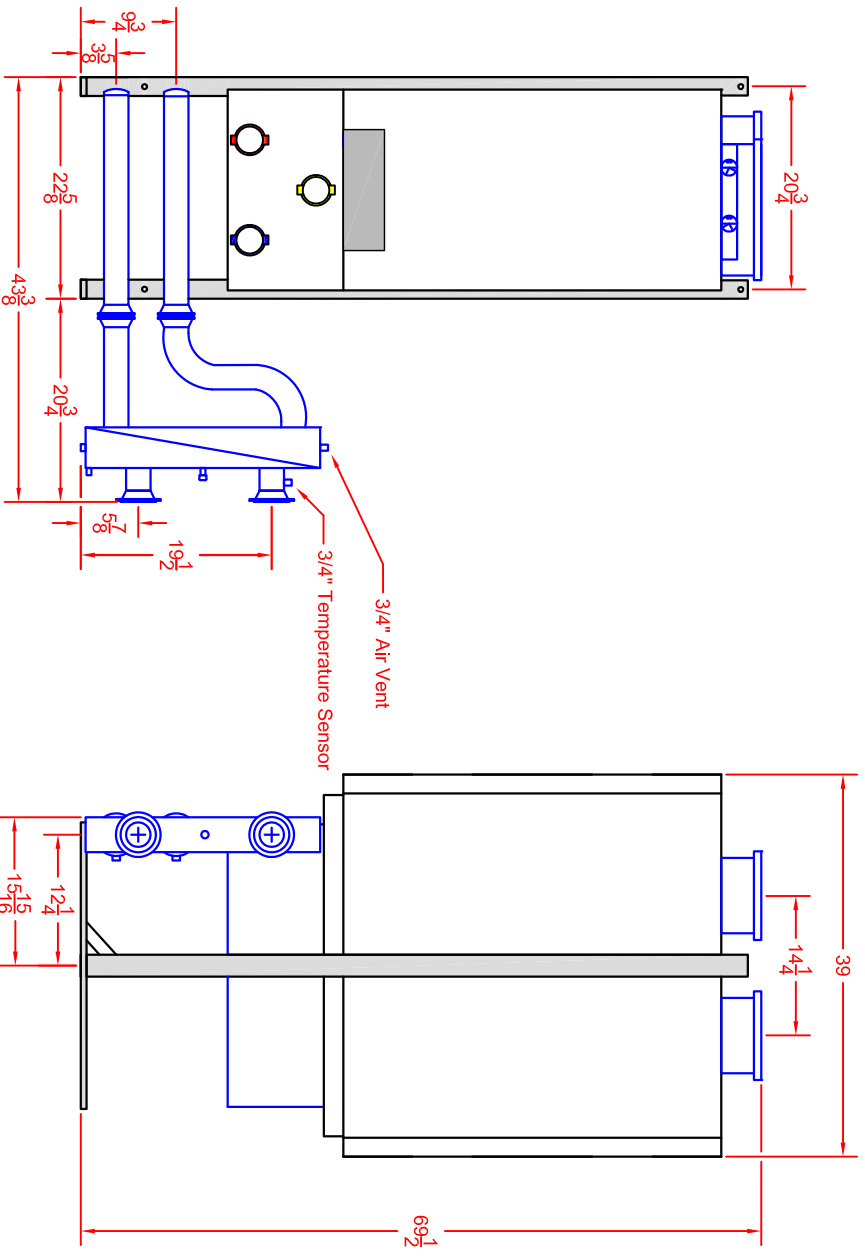
4

3

2

1

REVISIONS			
REV	DESCRIPTION	DATE	APPROVED
A	ADD PART NO	05-09-2011	JH



Bosch Thermotechnology Corp.
 50 Wentworth Ave.
 Londonderry, NH 03053
 Phone: 603-552-1100

This drawing is the exclusive property of Bosch Thermotechnology Corporation, it may not be reproduced or given to third parties.

Bosch Thermotechnology Corp.

- Notes:
1. Companion NPT flange provided for field installation.
 2. Pipe size = 2 1/2"
 3. For more details on each boiler refer to the installation manual.
 4. Insulation is furnished but not shown for clarity.

Tolerance
 Fraction = ± 1/16"
 x.x = ± 0.030
 x.xx = ± 0.015
 x.xxx = ± 0.005

(UNLESS OTHERWISE NOTED)

Drawn By: VA
 Approved By: JH

DESCRIPTION			
GB162 Cascade TR-2			
SIZE	SCALE	PART NO.	REV.
A	NTS	BTC 432006104 A	A
DATE	SHEET		of
05/03/2011	1		1

4

3

2

1

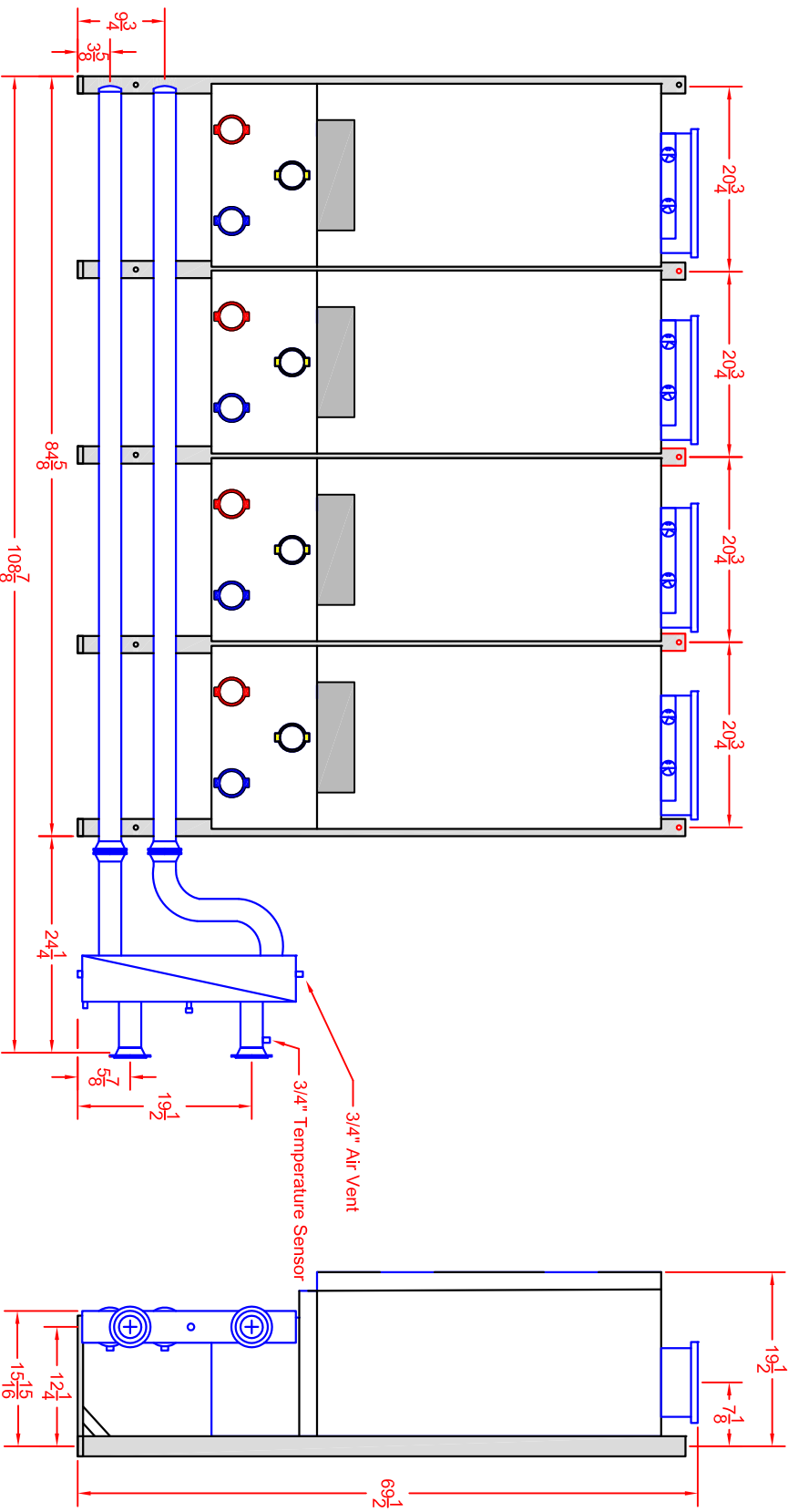
4

3

2

1

REVISIONS			
REV	DESCRIPTION	DATE	APPROVED
A	ADD PART NO	05-09-2011	JH



Notes:

1. Companion weld neck flange provided for field installation.
2. Pipe size = 3"
3. For more details on each boiler refer to the installation manual.
4. Insulation is furnished but not shown for clarity.

Bosch Thermotechnology Corp.
 50 Wentworth Ave.
 Londonderry, NH 03053
 Phone: 603-552-1100

This drawing is the exclusive property of Bosch Thermotechnology Corporation, it may not be reproduced or given to third parties.

Bosch Thermotechnology Corp.

Tolerance
 Fraction = $\pm \frac{1}{16}$
 x.xx = ± 0.030
 x.xxx = ± 0.015
 x.xxxx = ± 0.005

Drawn By: VA
 Approved By: JH

DESCRIPTION
 GB162 Cascade TL-4

SIZE	SCALE	PART NO.	REV.
A	NTS	BTC 432006105 A	A

(UNLESS OTHERWISE NOTED)

DATE 05/03/2011 SHEET 1 of 1

4

3

2

1

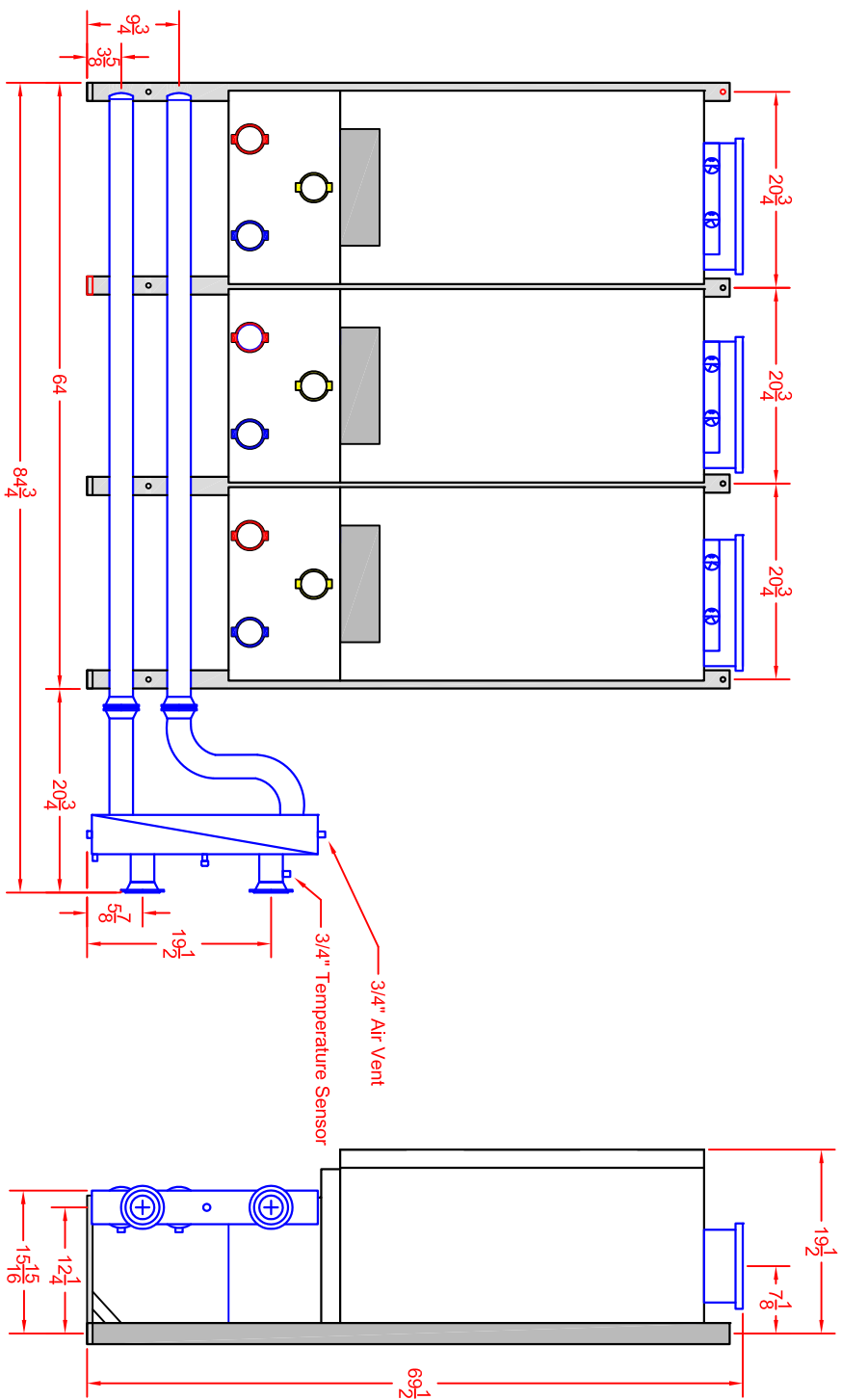
4

3

2

1

REVISIONS			
REV	DESCRIPTION	DATE	APPROVED
A	ADD PART NO	05-09-2011	JH



- Notes:
1. Companion NPT flange provided for field installation.
 2. Pipe size = 2 1/2"
 3. For more details on each boiler refer to the installation manual.
 4. Insulation is furnished but not shown for clarity.

Bosch Thermotechnology Corp.
 50 Wentworth Ave.
 Londonderry, NH 03053
 Phone: 603-552-1100

This drawing is the exclusive property of Bosch Thermotechnology Corporation, it may not be reproduced or given to third parties.

Bosch Thermotechnology Corp.

DESCRIPTION
 GB162 Cascade TL-3

Tolerance
 Fraction = ± 1/16"
 x.x = ± 0.030
 x.xx = ± 0.015
 x.xxx = ± 0.005

Drawn By: VA
 Approved By: JH

SIZE SCALE: A NTS
 PART NO.: BTC 432006106 A
 SHEET 1 of 1
 REV. A

(UNLESS OTHERWISE NOTED)

4

3

2

1

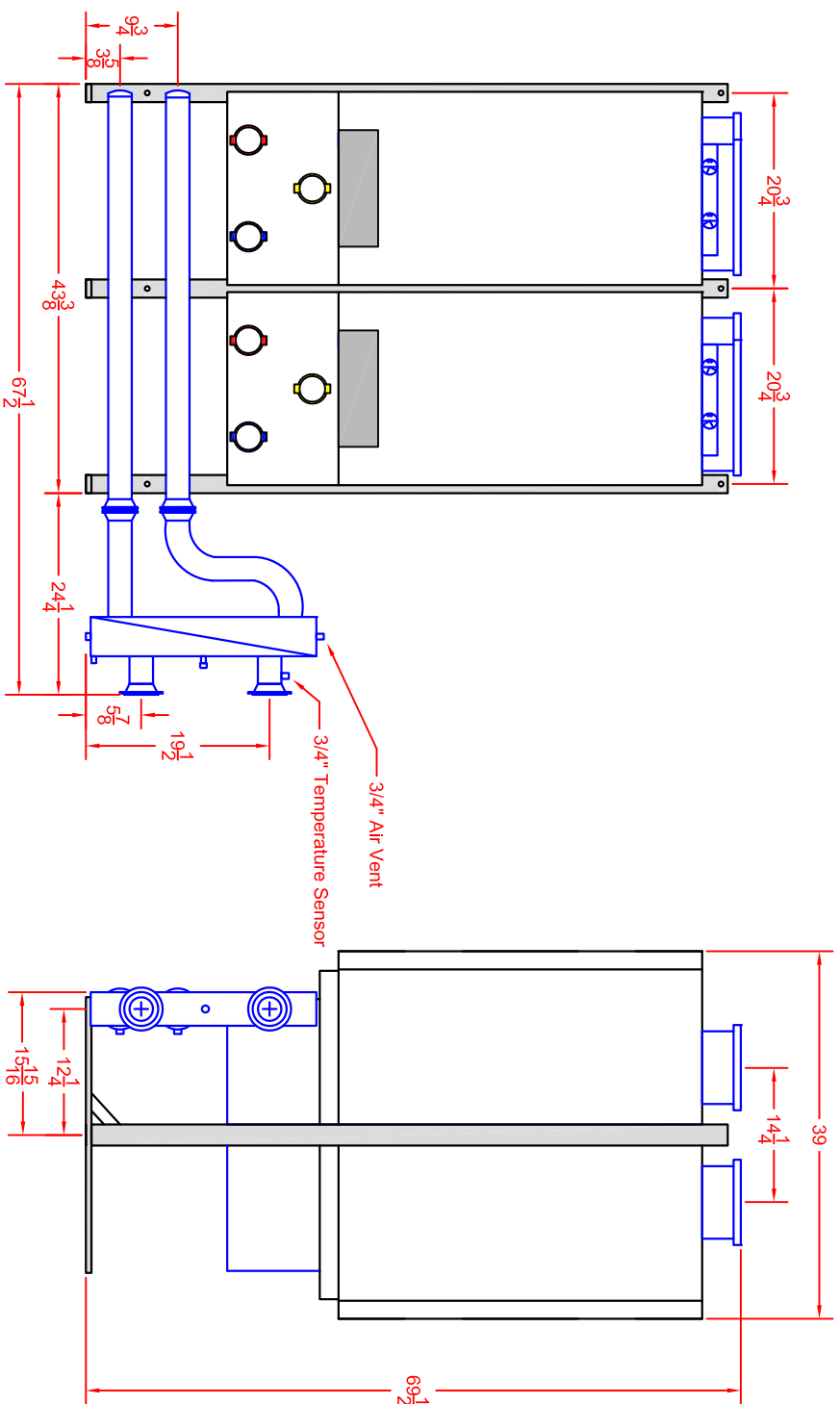
4

3

2

1

REVISIONS			
REV	DESCRIPTION	DATE	APPROVED
A	ADD PART NO	05-09-2011	JH



Notes:

1. Companion weld neck flange provided for field installation.
2. Pipe size = 3"
3. For more details on each boiler refer to the installation manual.
4. Insulation is furnished but not shown for clarity.

Bosch Thermotechnology Corp.
 50 Wentworth Ave.
 Londonderry, NH 03053
 Phone: 603-552-1100

This drawing is the exclusive property of Bosch Thermotechnology Corporation, it may not be reproduced or given to third parties.

Bosch Thermotechnology Corp.

DESCRIPTION
 GB162 Cascade TR-4

Tolerance
 Fraction = $\pm \frac{1}{16}$
 x.x = ± 0.030
 x.xxx = ± 0.015
 x.xxx = ± 0.005

Drawn By: VA
 Approved By: JH

SIZE/SCALE: A NTS
 DATE: 05/03/2011
 PART NO.: BTC 432006102 A
 SHEET 1 of 1
 REV.: A

4

3

2

1