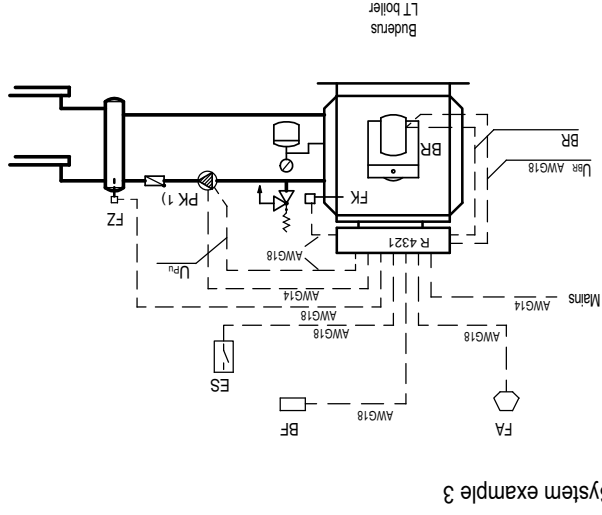
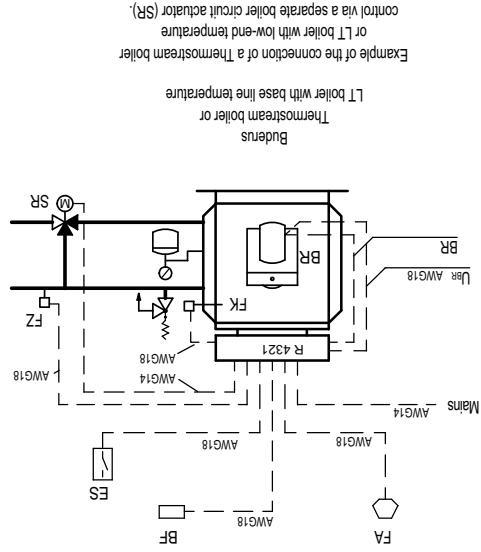




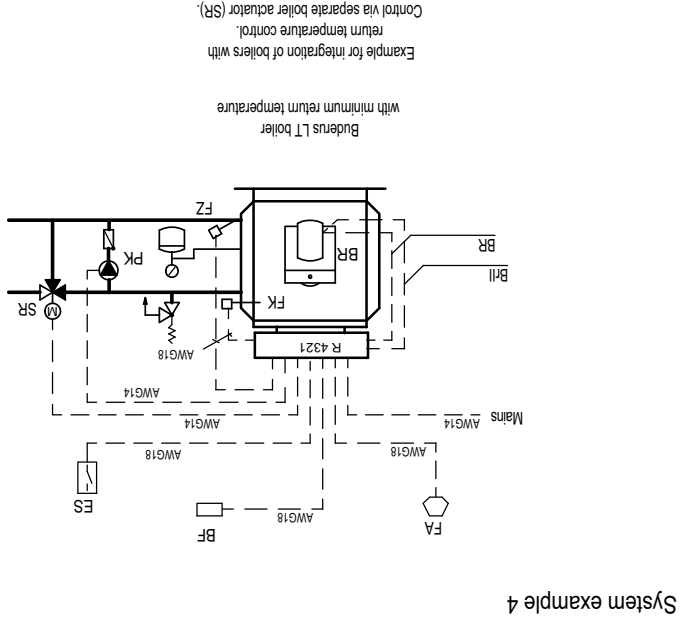
- Legend:
- BR remote control MEC2 or BFU burner
  - ES external fault input (dry contact)
  - FA boiler temperature sensor
  - FK boiler water temperature sensor
  - FZ auxiliary temperature sensor
  - PK boiler pump
  - SR return temperature actuator
  - U<sub>pu</sub> voltage output 0-10V pump
  - U<sub>br</sub> voltage output 0-10V burner



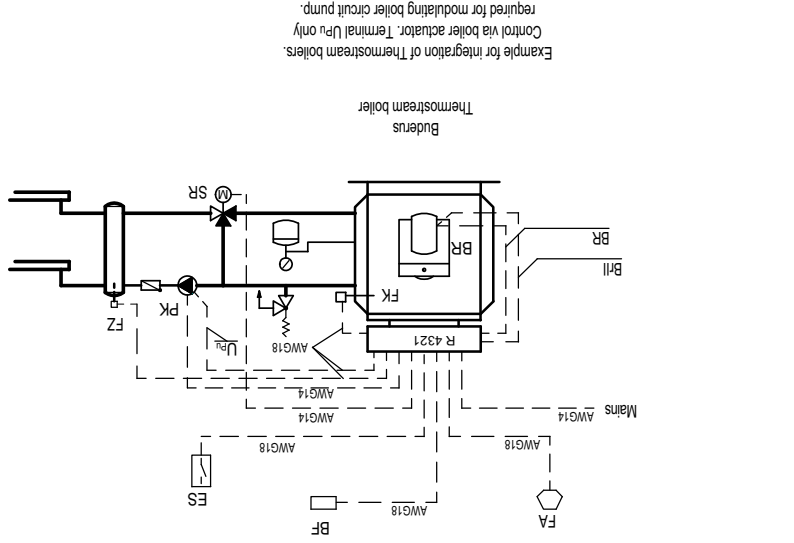
System example 3



System example 1



System example 4



System example 2