

Technical service bulletin Logamatic 2107 Control Installation

Buderus



These instructions are supplemental and the boiler and controller installation instructions supersede this bulletin at all times.

Procedure

1. Place the boiler in its final location.
2. Complete hydraulic connections.
3. Complete the installation of vent, combustion air and gas.
4. Remove rear half of top panel.
5. Remove the control access plate from the top of boiler.
6. Un-pack the 2107.
7. Install the 2107 on top on boiler and secure with 2 screws.
8. Locate the thermostat wire with green plug on top of the boiler (Figure 1) and pull it up into the 2107. Connect to the green terminal labeled "Burner" (Figure 2).

Figure 1

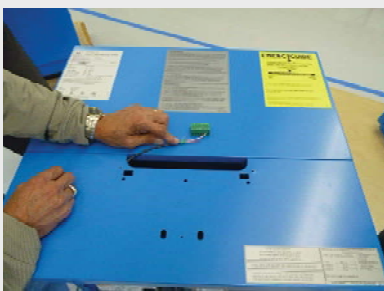
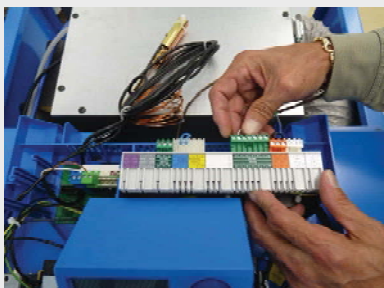


Figure 2



9. Bring line voltage to boiler and connect to both the bottom black power connector (see installation manual) and the white power connector on 2107.
10. Feed the 2107 sensor and capillary bundle from the control panel underneath the top cover to the front of the boiler and remove the spacers.

11. Pull Aquastat sensor out of the well (Figure 3) and remove the spacers.

Figure 3



12. Pull one of the capillaries out from inside its spacer. You may have to open two latches to do so.
13. Bundle Logamatic sensor, both capillaries, and aquastat sensor (without spacer), and insert in well as far as it will go (Figure 4).

Figure 4



14. Complete remainder of boiler and control panel installation.
15. Replace rear top panel of boiler.

Buderus

Bosch Thermotechnology Corp.
50 Wentworth Ave
Londonderry, NH 03053
Tel: (800) 283-3787
Fax: (603) 965-7581
www.buderus.us