

Technical Service Bulletin:

Control Board Replacement – Correct Setting Of Parameter (100) J4 Mode

Models: SSB255, SSB399, and SSB512 Boilers



BOSCH



Please read this entire document prior to proceeding with any work.



WARNING:

- ▶ This bulletin is intended to provide technical guidance to a professional who is qualified to work on gas boiler products and 110vac electrical components. If you are not qualified to work on such equipment, please obtain the services of such a professional.

Background

If the main control board (see fig.1 below) is replaced, prior to putting the boiler back into service it is necessary to ensure that the “(100) J4 Mode” parameter is correctly set to “HSI” and not “Alarm”. This will set the control up to work correctly with the boiler’s hot surface ignitor ignition system.

This bulletin describes how to set the “(100) J4 Mode”.

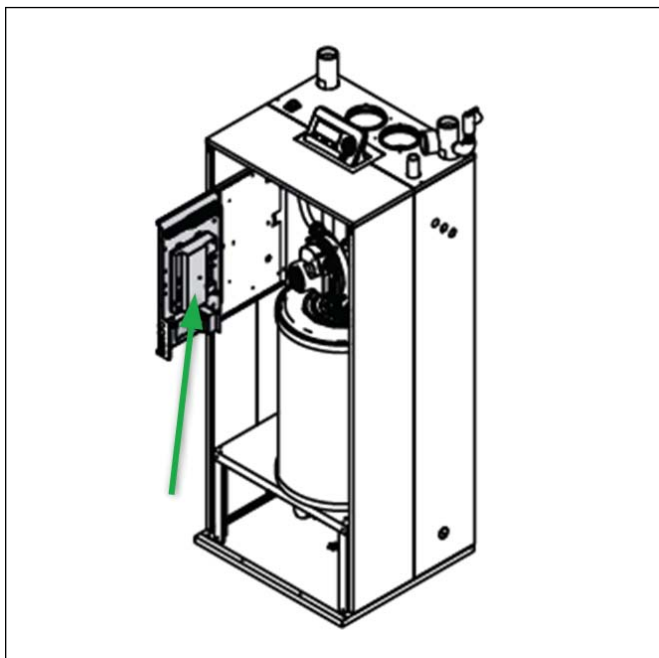


Figure 1 Location of main control board

Procedure

After installing the new main control board, please turn the power back on and follow these steps on the interface control that is mounted on top of the boiler:

1. Home screen.

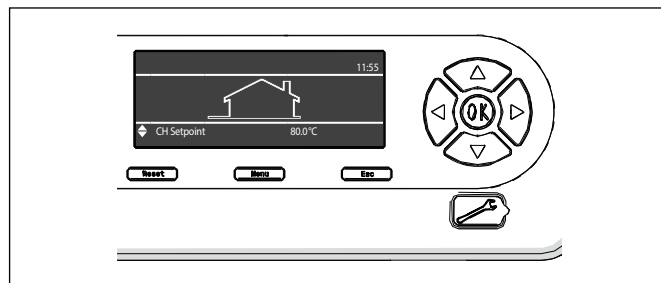


Figure 2

2. Push the Menu button and select the “Settings” menu by using the Up/Down arrows, then push OK.

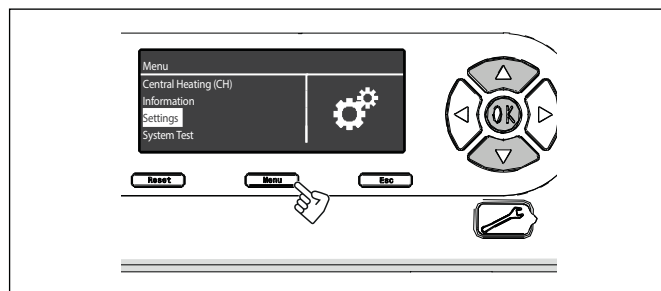


Figure 3

3. Select “Boiler Settings”.

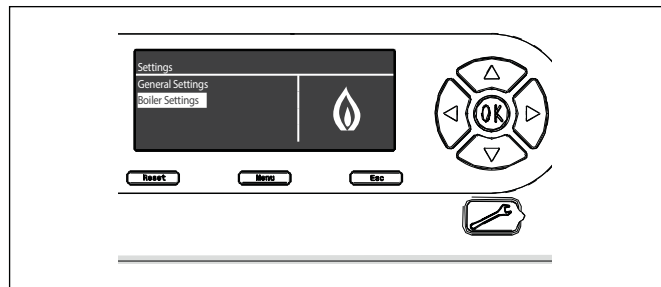


Figure 4

4. Scroll to enter "1200" using the UP/Down and OK buttons.

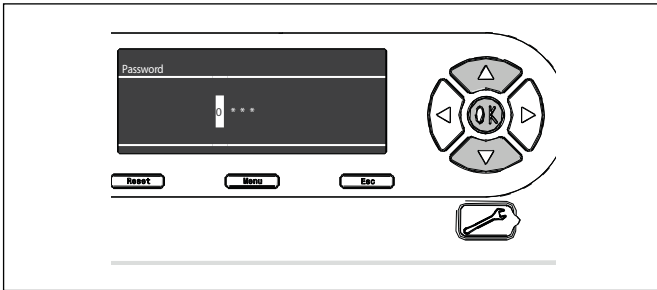


Figure 5

5. With the Up/Down buttons, scroll the Boiler Setting list up to parameter #100

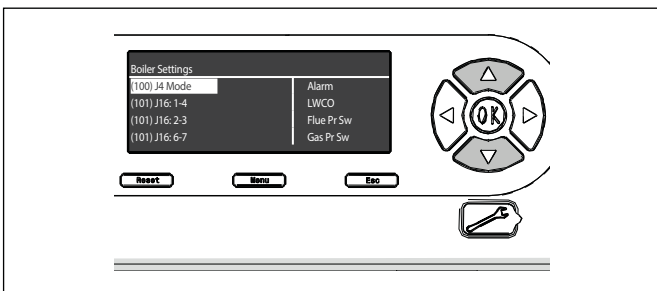


Figure 6

6. Push the Right button once, to highlight the "Alarm", then push the Down button until "HSI" shows on the screen. Push OK, then wait 10 secs.

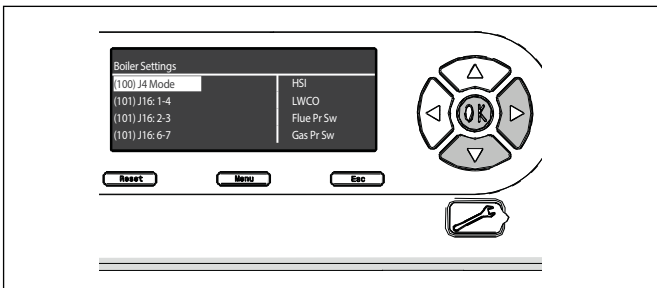


Figure 7

7. Press the Esc button twice, to go back to the Home screen. The boiler is ready to operate.

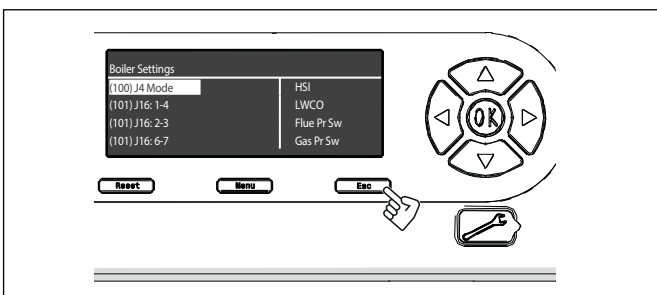


Figure 8

If you have any questions regarding the information provided in this document, please contact the Bosch Technical Support Department by phone at 1-800-283-3787, or via email at boiler.techsupport@us.bosch.com



Bosch Thermotechnology Corp.
65 Grove Street
Watertown, MA 02472

Tel: 1-866-642-3198

Fax: 1-603-965-7581

www.boschheatingandcooling.com