

4

3

2

1

D

D

C

C

B

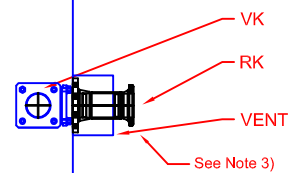
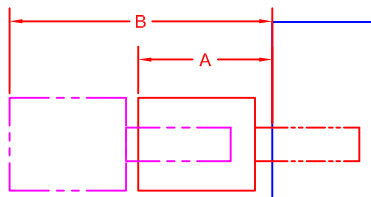
B

A

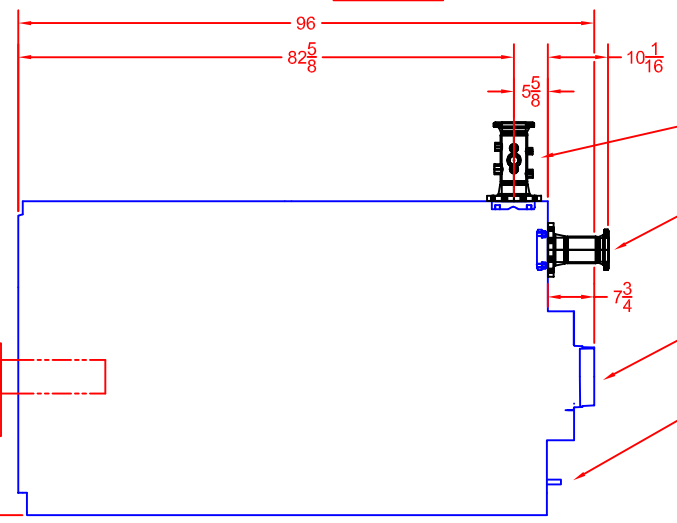
A

REVISIONS

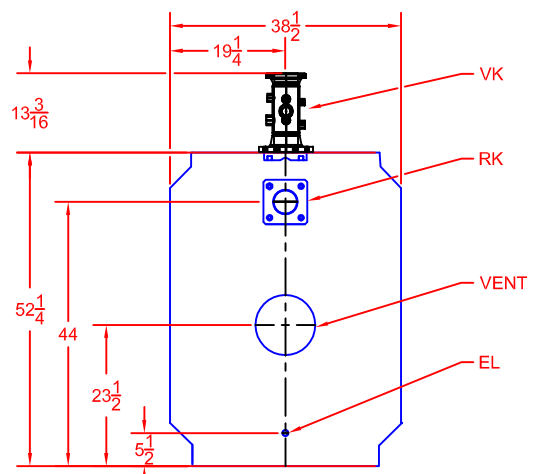
REV	DESCRIPTION	DATE	APPROVED
A	Released	5/12/2009	



PLAN VIEW



SIDE VIEW



REAR VIEW

G515-12 (1773 MBH)								
Oil								
Riello	A	B	Power Flame	A	B	Beckett	A	B
RL50/2	31 3/4	45 5/8	C3-0	39 1/2	44	CF2300A	23 1/4	29 1/4

Legend		
ABR.	Name	Size
VK	Supply	4
RK	Return 1	4
EL	Boiler Drain	3/4

NOTE 1. 'A' Dimension is to the back of the burner.
 'B' Dimension is the extraction dimension.

2. All dimensions are in inches.
 3. Manifold provided, field assembly required.
 4. Burner shipped separately; field assembly required.

Bosch Thermotechnology Corp.
 50 Wentworth Ave.
 Londonderry, NH 03053
 Phone: 603-552-1100

Tolerance

Fraction=±1/4"
 x.x=±0.030
 x.xx=±0.015
 x.xxx=±0.005

(UNLESS OTHERWISE NOTED)

This drawing is the exclusive property of Bosch Thermotechnology Corporation, it may not be reproduced or given to third parties.

Drawn By:
 M SPIRIDIGLOZZI

Approved By:
 J MILLS

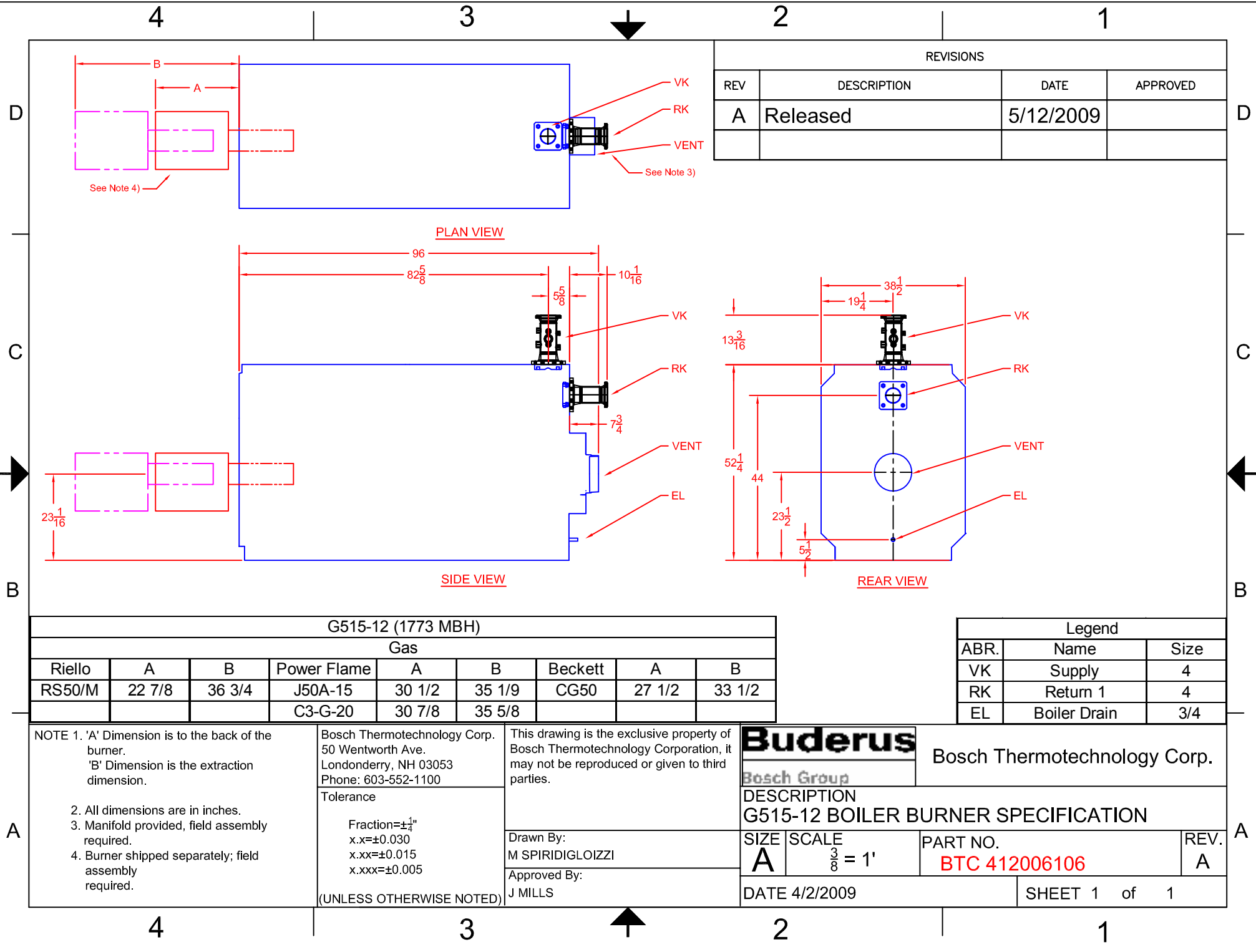
Buderus Bosch Thermotechnology Corp.

Bosch Group

DESCRIPTION
G515-12 BOILER BURNER SPECIFICATION

SIZE	SCALE	PART NO.	REV.
A	3/8" = 1'	BTC 412006106	A

DATE 4/2/2009 SHEET 1 of 1



REVISIONS			
REV	DESCRIPTION	DATE	APPROVED
A	Released	5/12/2009	

G515-12 (1773 MBH)								
Gas								
Riello	A	B	Power Flame	A	B	Beckett	A	B
RS50/M	22 7/8	36 3/4	J50A-15	30 1/2	35 1/9	CG50	27 1/2	33 1/2
			C3-G-20	30 7/8	35 5/8			

Legend		
ABR.	Name	Size
VK	Supply	4
RK	Return 1	4
EL	Boiler Drain	3/4

NOTE 1. 'A' Dimension is to the back of the burner.
 'B' Dimension is the extraction dimension.

2. All dimensions are in inches.
 3. Manifold provided, field assembly required.
 4. Burner shipped separately; field assembly required.

Bosch Thermotechnology Corp.
 50 Wentworth Ave.
 Londonderry, NH 03053
 Phone: 603-552-1100

Tolerance

Fraction = $\pm\frac{1}{4}$ "
 x.x = ± 0.030
 x.xx = ± 0.015
 x.xxx = ± 0.005

(UNLESS OTHERWISE NOTED)

This drawing is the exclusive property of Bosch Thermotechnology Corporation, it may not be reproduced or given to third parties.

Drawn By:
 M SPIRIDIGLOZZI

Approved By:
 J MILLS

Buderus Bosch Thermotechnology Corp.

Bosch Group

DESCRIPTION
G515-12 BOILER BURNER SPECIFICATION

SIZE	SCALE	PART NO.	REV.
A	$\frac{3}{8} = 1'$	BTC 412006106	A

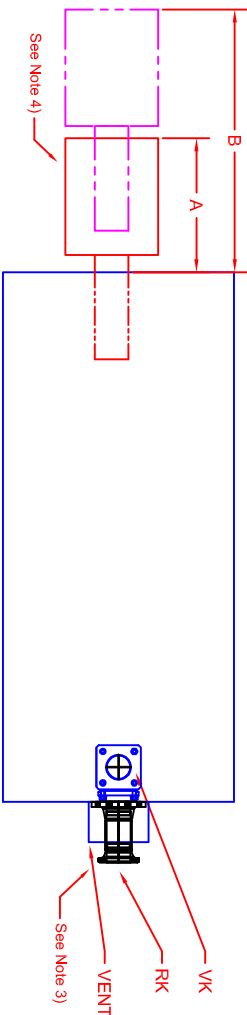
DATE 4/2/2009 SHEET 1 of 1

4

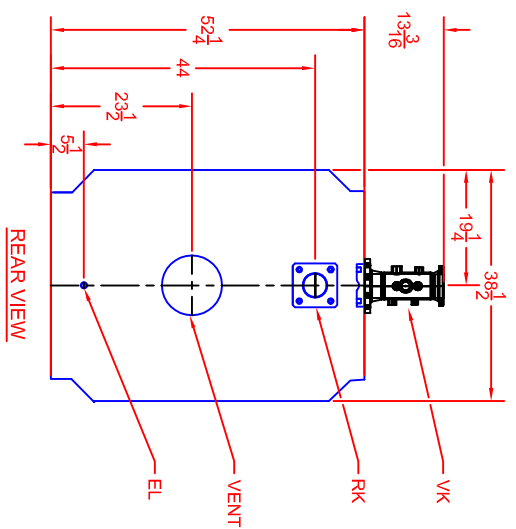
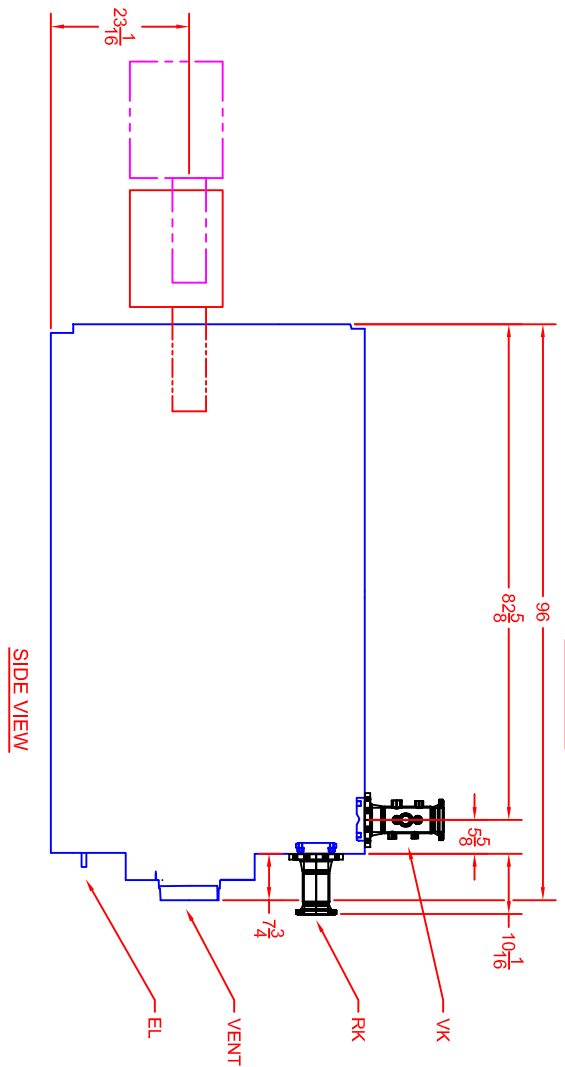
3

2

1



REVISIONS			
REV	DESCRIPTION	DATE	APPROVED
A	Released	5/12/2009	



G515-12 (1773 MBH)			
Combination			
Riello	A	B	Power Flame
RLS50	22 7/8	31 5/16	C3-GO-20
	A	A	B
		39 1/2	44

NOTE 1. 'A' Dimension is to the back of the burner.
 'B' Dimension is the extraction dimension.

Bosch Thermotechnology Corp.
 50 Wentworth Ave.
 Londonderry, NH 03053
 Phone: 603-652-1100

Tolerance

- Fraction= $\pm\frac{1}{16}$ "
- x.x= ± 0.030
- x.xx= ± 0.015
- x.xxx= ± 0.005

This drawing is the exclusive property of Bosch Thermotechnology Corporation, it may not be reproduced or given to third parties.

Drawn By:
M SP1RIDIGLOIZZI

Approved By:
J MILLS

Legend		
ABR.	Name	Size
VK	Supply	4
RK	Return 1	4
EL	Boiler Drain	3/4

Buderus Bosch Thermotechnology Corp.

DESCRIPTION
 G515-12 BOILER BURNER SPECIFICATION

SIZE SCALE
 A $\frac{3}{8} = 1'$ PART NO. **BTC 412006106** REV. A

DATE 4/2/2009 SHEET 1 of 1

2. All dimensions are in inches.
3. Manifold provided, field assembly required.
4. Burner shipped separately; field assembly required.

4

3

2

1

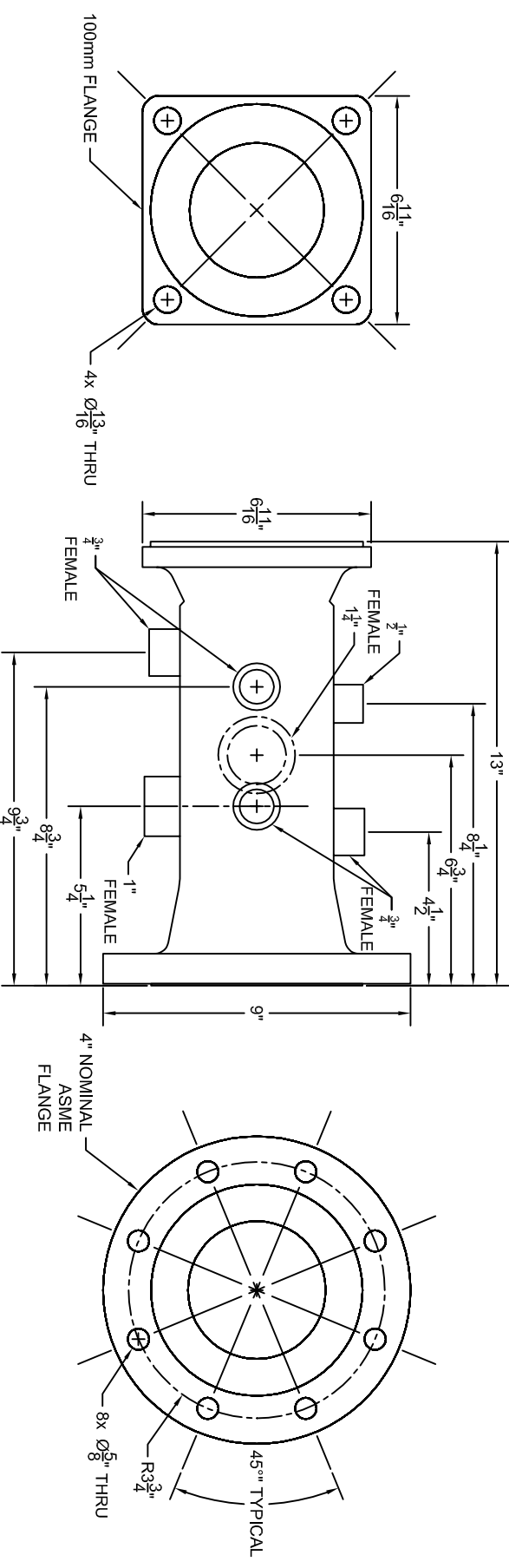
4

3

2

1

REVISIONS		
REV	DESCRIPTION	DATE
A	RELEASED	6/12/2009
		APPROVED



END VIEW

SIDE VIEW

END VIEW

NOTE
 1. All dimensions are in inches.
 2. All pipe sizes are NPT.

Bosch Thermotechnology Corp.
 50 Wentworth Ave.
 Londonderry, NH 03053
 Phone: 603-652-1100

This drawing is the exclusive property of Bosch Thermotechnology Corporation, it may not be reproduced or given to third parties.

Tolerance

Fraction= $\pm\frac{1}{16}$ "
 x.x= ± 0.030
 x.xx= ± 0.015
 x.xxx= ± 0.005

(UNLESS OTHERWISE NOTED)

Drawn By:
 M SPIRIDIGLOIZZI

Approved By:
 J MILLS

Buderus
 Bosch Group

Bosch Thermotechnology Corp.

DESCRIPTION
 G515 SUPPLY MANIFOLD SPECIFICATION

SIZE SCALE
 A NTS

PART NO.
 BTC 412006113

REV.
 A

DATE 6/9/2009

SHEET 1 of 2

A

B

C

D

A

B

C

D

4

3

2

1

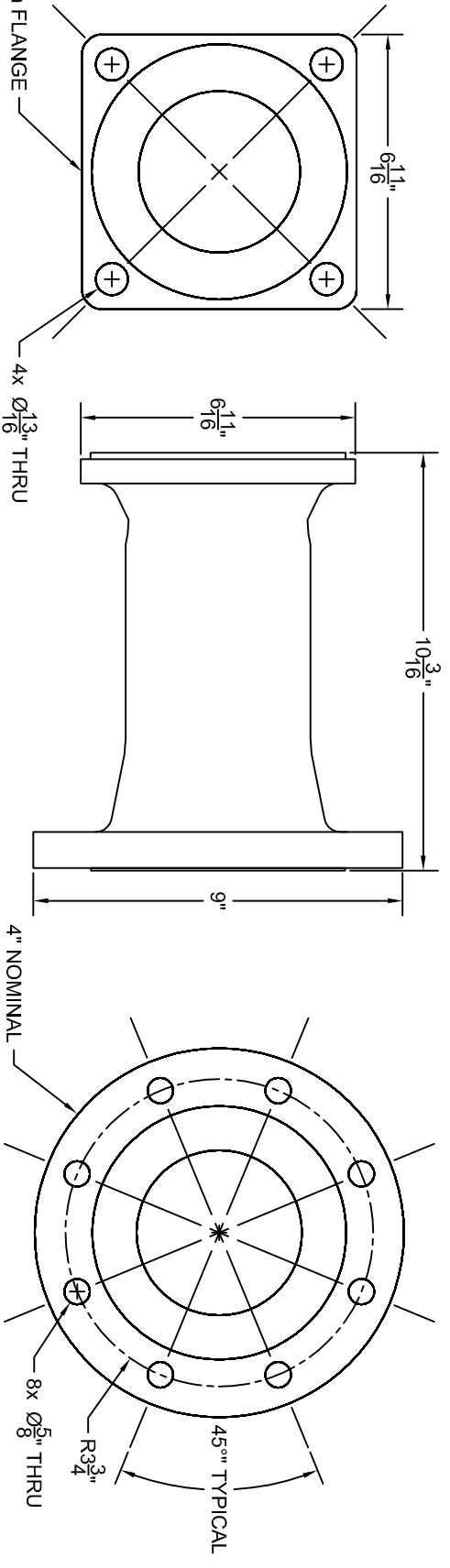
4

3

2

1

REVISIONS			
REV	DESCRIPTION	DATE	APPROVED
A	RELEASED	6/12/2009	



END VIEW

SIDE VIEW

END VIEW

NOTE
 1. All dimensions are in inches.
 2. All pipe sizes are NPT.

Bosch Thermotechnology Corp.
 50 Wentworth Ave.
 Londonderry, NH 03053
 Phone: 603-652-1100

This drawing is the exclusive property of Bosch Thermotechnology Corporation, it may not be reproduced or given to third parties.

Buderus
 Bosch Group

Bosch Thermotechnology Corp.

Tolerance
 Fraction= $\pm\frac{1}{16}$ "
 x.x= ± 0.030
 x.xx= ± 0.015
 x.xxx= ± 0.005

Drawn By: M SPIRIDIDLOIZZI
 Approved By: J MILLS

DESCRIPTION
 G515 RETURN MANIFOLD SPECIFICATION

DATE 6/9/2009

(UNLESS OTHERWISE NOTED)

SIZE SCALE
 A NTS

PART NO.
 BTC 412006113

SHEET 2 of 2

4

3

2

1

A

B

C

D

A

B

C

D