

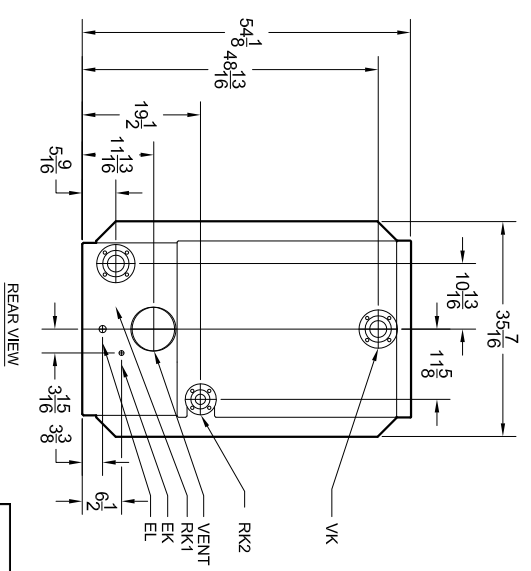
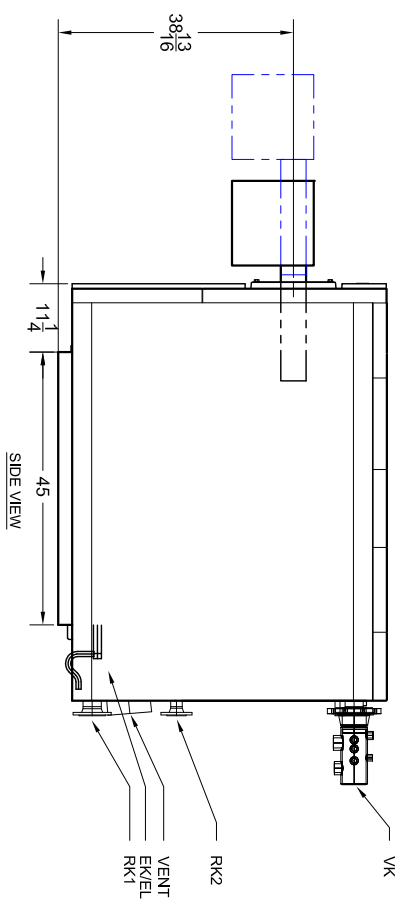
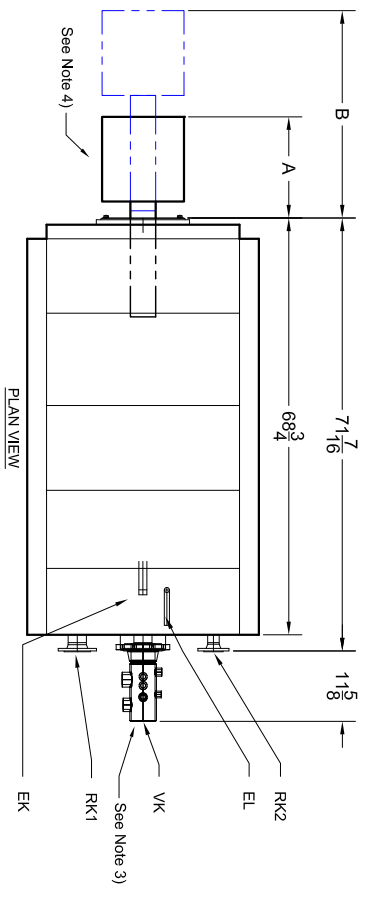
4

3

2

1

REVISIONS			
REV	DESCRIPTION	DATE	APPROVED
A	Released	3/24/2010	JM
B	Dimensions update	9/7/2011	JH



SB615-145 KW (484 MBh)					
Make	Riello	Power Flame	Beckett	Power Flame 20 ppm	
Model	40G900	J15A-10	C1-G-10	CG10.3S	NP2-G-63
A	15 5/16	22 1/4	30 7/8	18 1/2	38 1/8
B	25 15/16	25 1/4	34 1/8	25 1/2	48 3/8

Legend		
ABR.	Name	Size
VK	Supply	2 1/2
RK1	Return 1	2 1/2
RK2	Return 2	2
EK	Condensate Drain	3/4
EL	Boiler Drain	1

NOTE 1. 'A' Dimension is to the back of the burner.  
 'B' Dimension is the extraction dimension.

Bosch Thermotechnology Corp.  
 50 Wentworth Ave.  
 Londonderry, NH 03063  
 Phone: 603-552-1100



This drawing is the exclusive property of Bosch Thermotechnology Corporation, it may not be reproduced or given to third parties.

**Bosch Thermotechnology Corp.**

Tolerance

Fraction= $\pm\frac{1}{16}$   
 x.x= $\pm 0.030$   
 x.xx= $\pm 0.015$   
 x.xxx= $\pm 0.005$

- All dimensions are in inches.
- Manifold provided, field assembly required.
- Burner shipped separately; field assembly required.

(UNLESS OTHERWISE NOTED)

Drawn By: VA  
 Approved By: JM

DESCRIPTION  
**SB615-145 BOILER BURNER SPECIFICATION**

SIZE SCALE  
**A NTS**

PART NO.  
**BTC 433006101**

DATE 4/2/2009

SHEET 1 of 1

4

3

2

1