

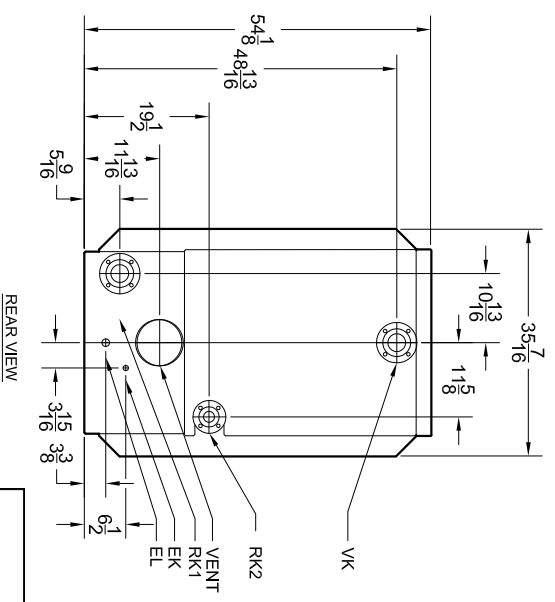
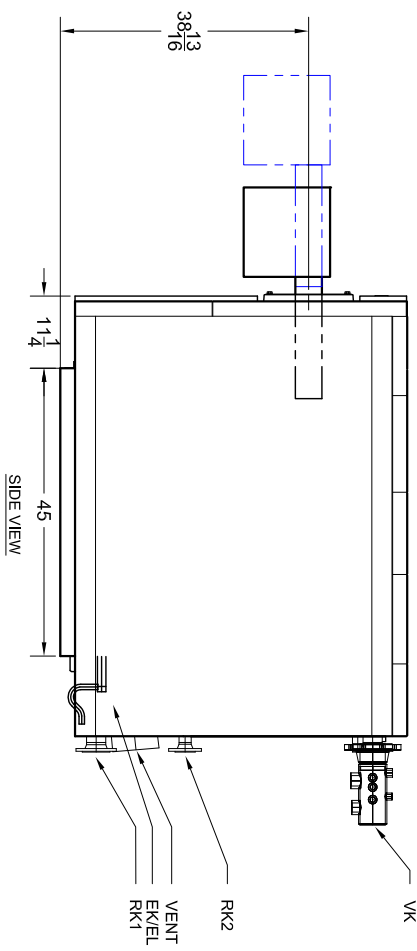
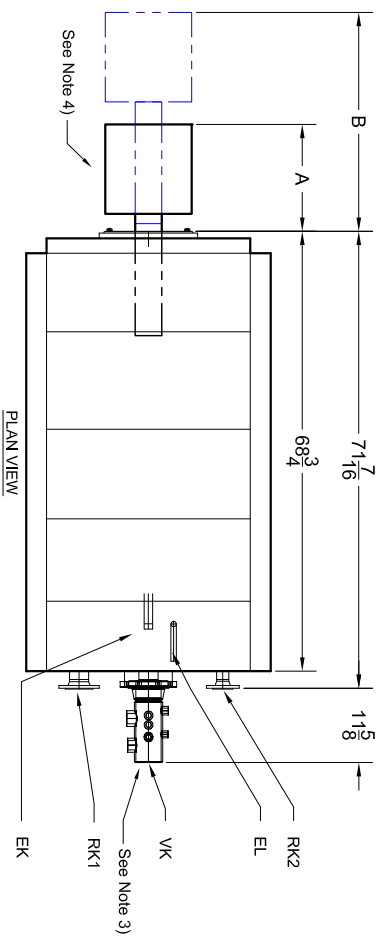
4

3

2

1

REVISIONS			
REV	DESCRIPTION	DATE	APPROVED
A	Released	3/24/2010	JM
B	Dimensions update	9/7/2011	JH



SB615-185 KW (612 MBh)					
Make	Riello	Power Flame	Beckett	Power Flame	20 ppm
Model	40G900	J15A-10	C1-G-10	CG10.4S	NP2-G-63
A	15 5/16	22 1/4	30 7/8	18 1/2	38 1/8
B	25 15/16	25 1/4	34 1/8	25 1/2	48 3/8

NOTE 1. 'A' Dimension is to the back of the burner.
 'B' Dimension is the extraction dimension.

Bosch Thermotechnology Corp.
 50 Wentworth Ave.
 Londonderry, NH 03053
 Phone: 603-552-1100

This drawing is the exclusive property of Bosch Thermotechnology Corporation, it may not be reproduced or given to third parties.



Bosch Thermotechnology Corp.

DESCRIPTION
 SB615-185 BOILER BURNER SPECIFICATION

Drawn By: VA
 Approved By: J M

SIZE SCALE	NTS	PART NO.	BTC 433006102	REV.	B
------------	-----	----------	---------------	------	---

DATE 4/2/2009 SHEET 1 of 1

2. All dimensions are in inches.
3. Manifold provided, field assembly required.
4. Burner shipped separately; field assembly required.

4

3

2

1

Legend		
ABR.	Name	Size
VK	Supply	2 1/2
RK1	Return 1	2 1/2
RK2	Return 2	2
EK	Condensate Drain	3/4
EL	Boiler Drain	1