

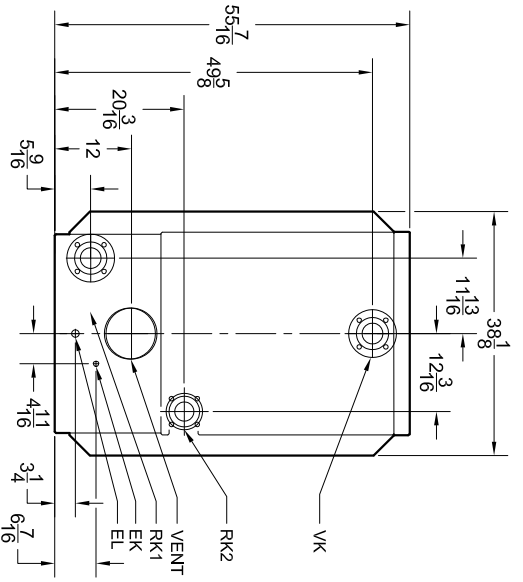
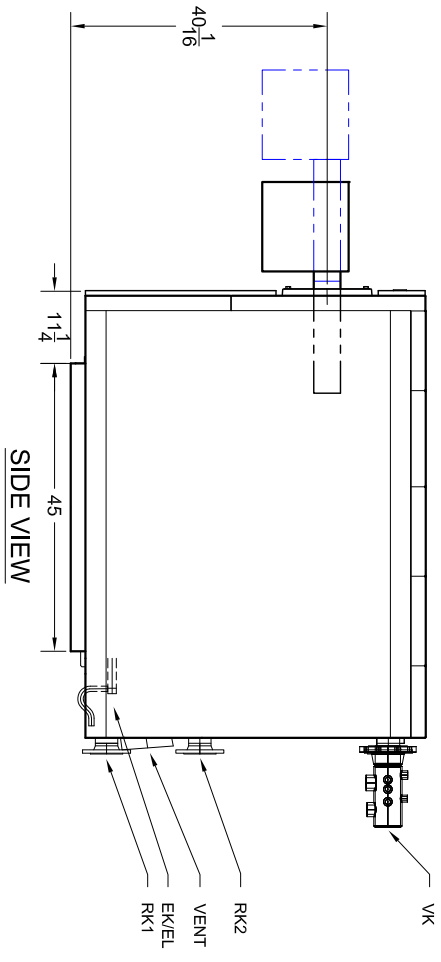
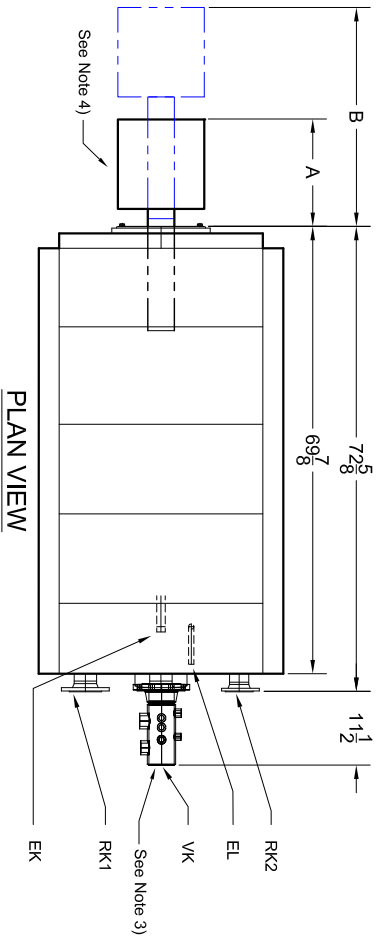
4

3

2

1

REVISIONS			
REV	DESCRIPTION	DATE	APPROVED
A	Released	3/24/2010	JM
B	Dimensions update	9/7/2011	JH



SB615-240 KW ( 791 MBh)				
Make	Riello	Power Flame	Beckett	Power Flame 20 ppm
Model	RS28/M	J30A-10	C1-G-10	CG10.5S NP2-G-120
A	22 13/16	22 1/4	30 7/8	18 1/2 38 1/8
B	36 5/8	25 1/4	34 1/8	25 1/2 53 3/8

NOTE 1. 'A' Dimension is to the back of the burner.  
 'B' Dimension is the extraction dimension.

This drawing is the exclusive property of Bosch Thermotechnology Corporation, it may not be reproduced or given to third parties.



Bosch Thermotechnology Corp.

DESCRIPTION  
 SB615-240 BOILER BURNER SPECIFICATION

SIZE SCALE	PART NO.	REV.
A NTS	BTC 433006103	B

DATE	SHEET	of	1
4/2/2009	1	1	

- 2. All dimensions are in inches.
- 3. Manifold provided, field assembly required.
- 4. Burner shipped separately; field assembly required.

Fraction = ± 1/16"  
 x.x = ±0.030  
 x.xx = ±0.015  
 x.xxx = ±0.005

Drawn By: VA  
 Approved By: JM

(UNLESS OTHERWISE NOTED)

4

3

2

1