

## Technical Service Bulletin:

# Motor & Motor Module Replacement

Models: Bosch IDS BVA2.0



# BOSCH



Please read this entire document prior to proceeding with any work.



### WARNING:

- ▶ Improper servicing could result in dangerous operation, injury or property damage. The operations described here-below must be performed by qualified personnel.



### WARNING: ELECTRICAL SHOCK

- ▶ Do not directly touch the unit unless power is disconnected.

## Replacement Procedure



Take a picture before remove anything so you know where to plug everything back in.

1. Remove upper access panel.



Figure 1 Removing upper access panel

2. Pull out the motor plug and remove carefully.

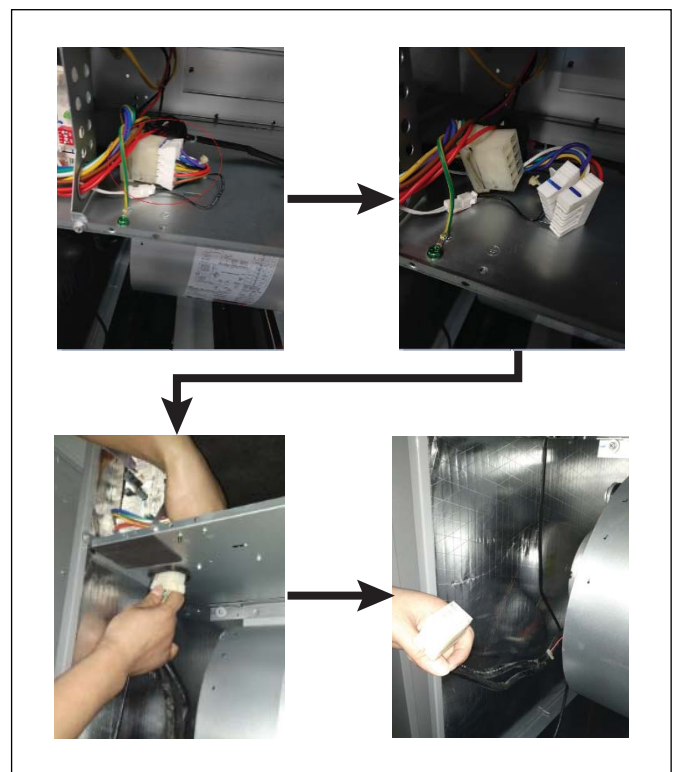


Figure 2 Motor plug removal

3. Remove screws on the blower and take out the blower.

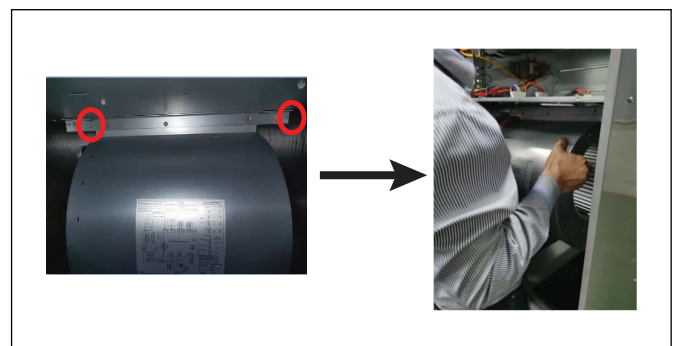


Figure 3 Blower removal

**Motor Module Replacement**

4. Remove white glue on screw and remove screw.

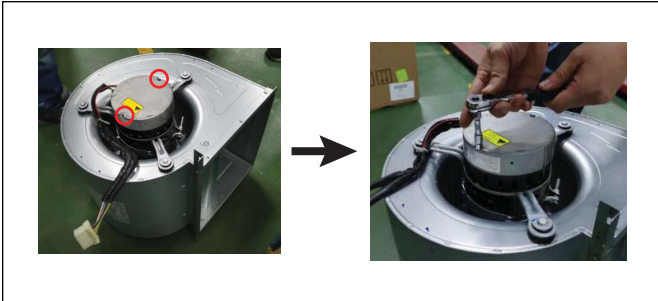


Figure 4

5. Remove internal motor plugs.



Figure 5

6. Replace a new motor module and put back the motor plug.

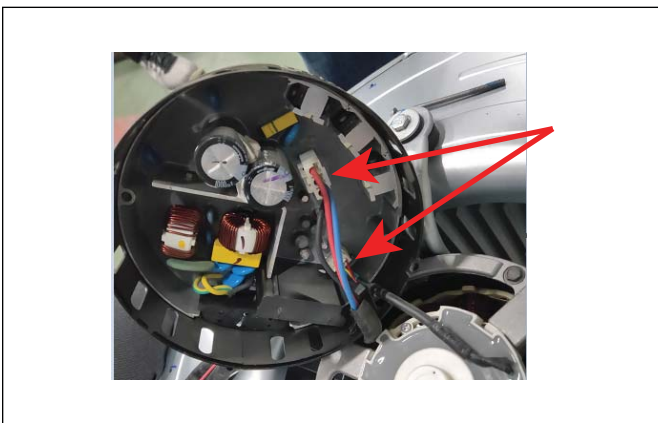


Figure 6

**Motor Replacement**

7. Remove screws on the blower and take out the motor.

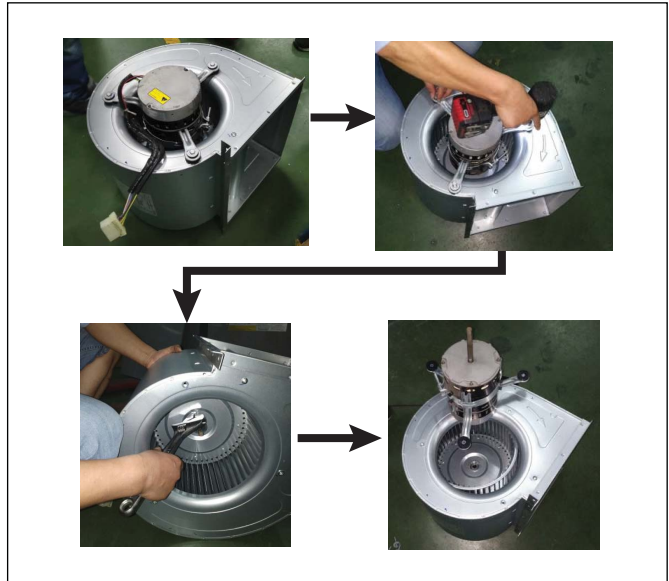


Figure 7

8. Remove motor arms.

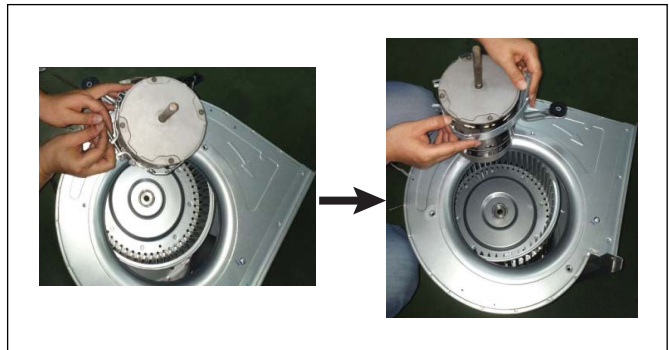


Figure 8

9. Replace a new motor and put back motor arms.

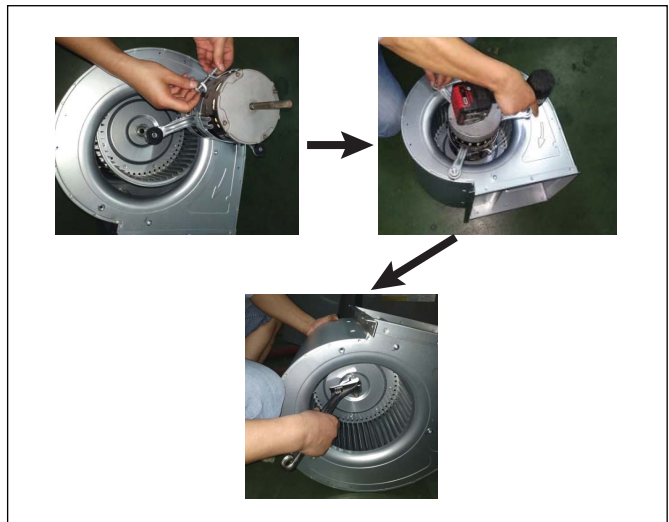


Figure 9

10. Put back the blower motor and secure the motor

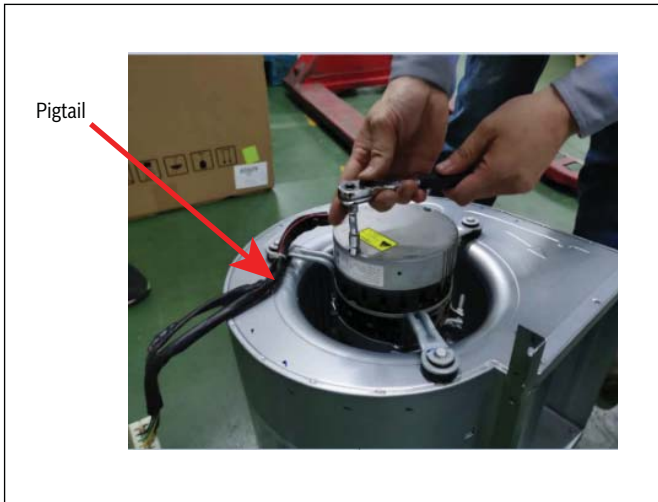


Figure 10

**i** The motor pigtail should stay in the direction shown in Figure 10. If turned 180 degrees, the wiring will be too short to connect to motor plug.

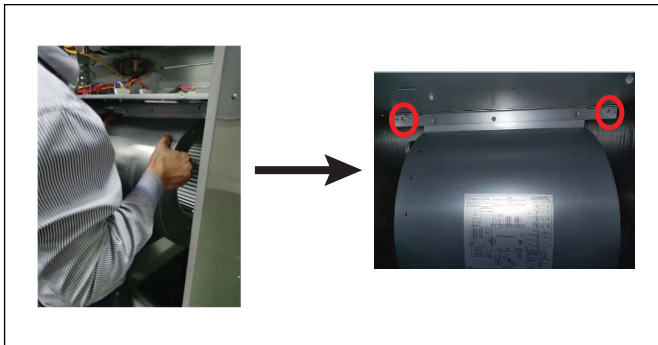


Figure 11

11. Connect the motor plug.

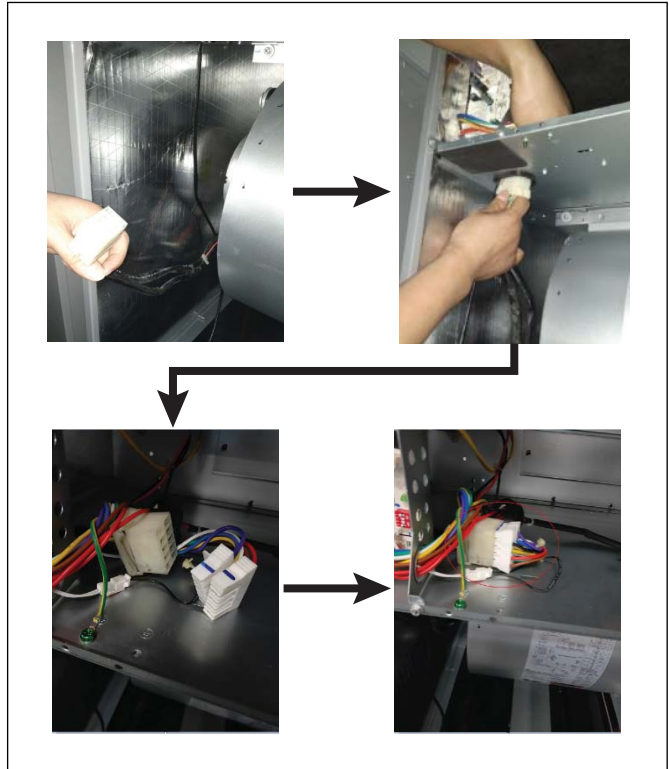


Figure 12

12. Put back the blower access panel.



Figure 13



**BOSCH**  
 Bosch Thermotechnology Corp.  
 65 Grove Street  
 Watertown, MA 02472  
 Tel: 1-866-642-3198  
 Fax: 1-603-965-7581  
 www.boschheatingandcooling.com