

Service bulletin

Measuring gas pressure



BOSCH

Introduction

- ▶ In order to meet design capacities of this unit, the gas supply must meet the design requirements.
- ▶ It is important to size the gas line to meet the requirements of ALL gas appliances. Please consult the National Fuel Gas Code NFPA 54, or a locally licensed gas technician if you are unsure of the gas line size.
- ▶ While testing for adequate gas pressure, all gas appliances must be operated at full capacity.

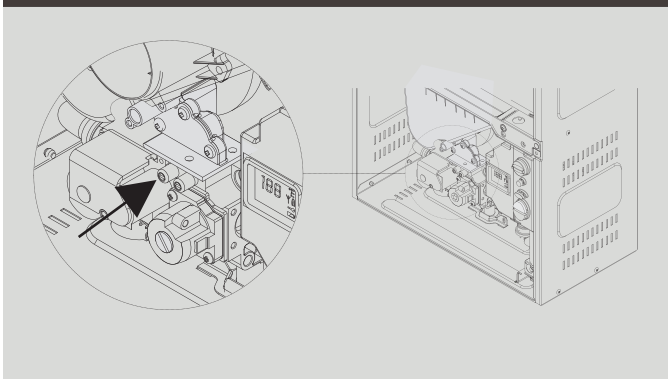
Tools needed:

- ▶ Manometer
- ▶ Philips head screw driver
- ▶ Small flat head screw driver

Connecting Manometer

1. Shut off gas supply with installer supplied shut off valve.
2. Remove front cover and locate inlet gas pressure measuring tap on gas valve.

Gas pressure measuring tap (left tapping)



3. Loosen screw inside the tap with a small flat head screw driver (do not remove) and connect manometer tube on test tap (if manometer fitting goes inside the tap, remove screw.)

Static Pressure Test

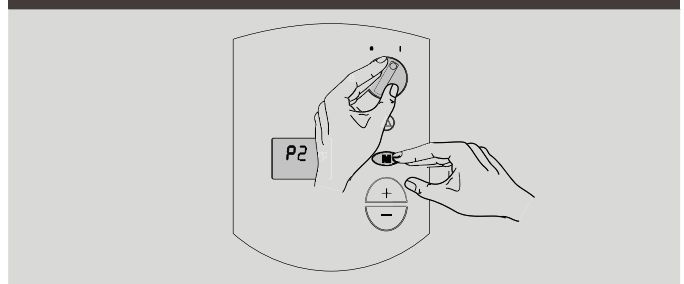
1. Turn gas supply back on.
2. Operate all other gas appliances on same gas piping system at maximum output.
3. Gas pressures lower than 5" W.C. for Natural Gas or 11" W.C. for Liquid Propane will result in insufficient degree rise to the hot water being used and must be corrected.

Operating Pressure Test

NOTE: Reset any error codes with reset button first.

1. Put ON/OFF switch in the OFF position.
2. Press and hold the "Program" (M) button and turn ON/OFF switch to ON position.
3. As soon as '188' is displayed, release "Program" button and the display should read 'P2'.

Program mode



4. Press the '+' button, until P1 appears.
5. Turn on a high volume of hot water flow (at least 6 gpm) and the heater will ignite.
6. Gas pressures lower than 5" W.C. for Natural Gas or 11" W.C. for Liquid Propane will result in insufficient degree rise to the hot water being used and must be corrected.
7. Remove manometer from measuring tap and tighten screw

Common causes of low gas pressure

- ▶ Appliance gas connector is not at least $\frac{3}{4}$ ".
- ▶ Gas line was not sized large enough. Most often found in retrofit applications.
- ▶ The gas filter on the bottom of the unit is clogged with pipe dope or other debris.
- ▶ Gas meter or regulator is not set to deliver enough gas or is defective. Have gas or propane supplier verify proper operation.

BBT North America Corporation
Bosch Group

Bosch Water Heating
340 Mad River Park
Waitsfield, VT 05673
Telephone 800-642-3111
Fax (802) 496-6924
techsupport@boschhotwater.com