

Service bulletin

Gas conversion



BOSCH

Introduction

- i This procedure must be performed by a licensed gas technician
- i Failure to properly calibrate heater's CO₂ level may result in a hazardous condition.

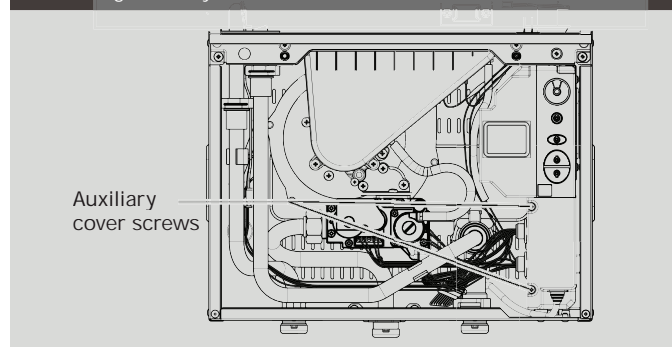
Tools needed:

- i Philips head screw driver
- i #40 Torx driver
- i Digital combustion gas analyzer (Not CO detector)

Preparation

1. Turn power switch to off (O) position and unplug power cord.
2. Remove front cover (see installation manual).
3. Remove control board access cover.

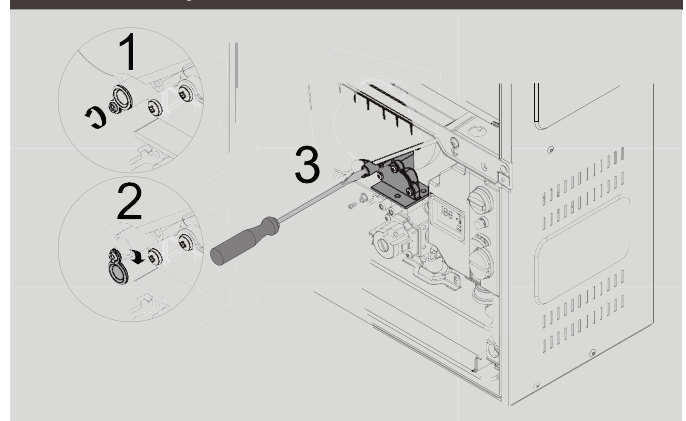
Removing auxiliary cover



4. Remove lower wire harness from control board.

5. Loosen yellow painted Philips screw and cover should rotate down revealing a brass slotted screw.

Brass slotted adjustment screw



6. Remove yellow painted #40 Torx cover from the front of the gas valve revealing a plastic #40 Torx screw.

Torx adjustment screw

